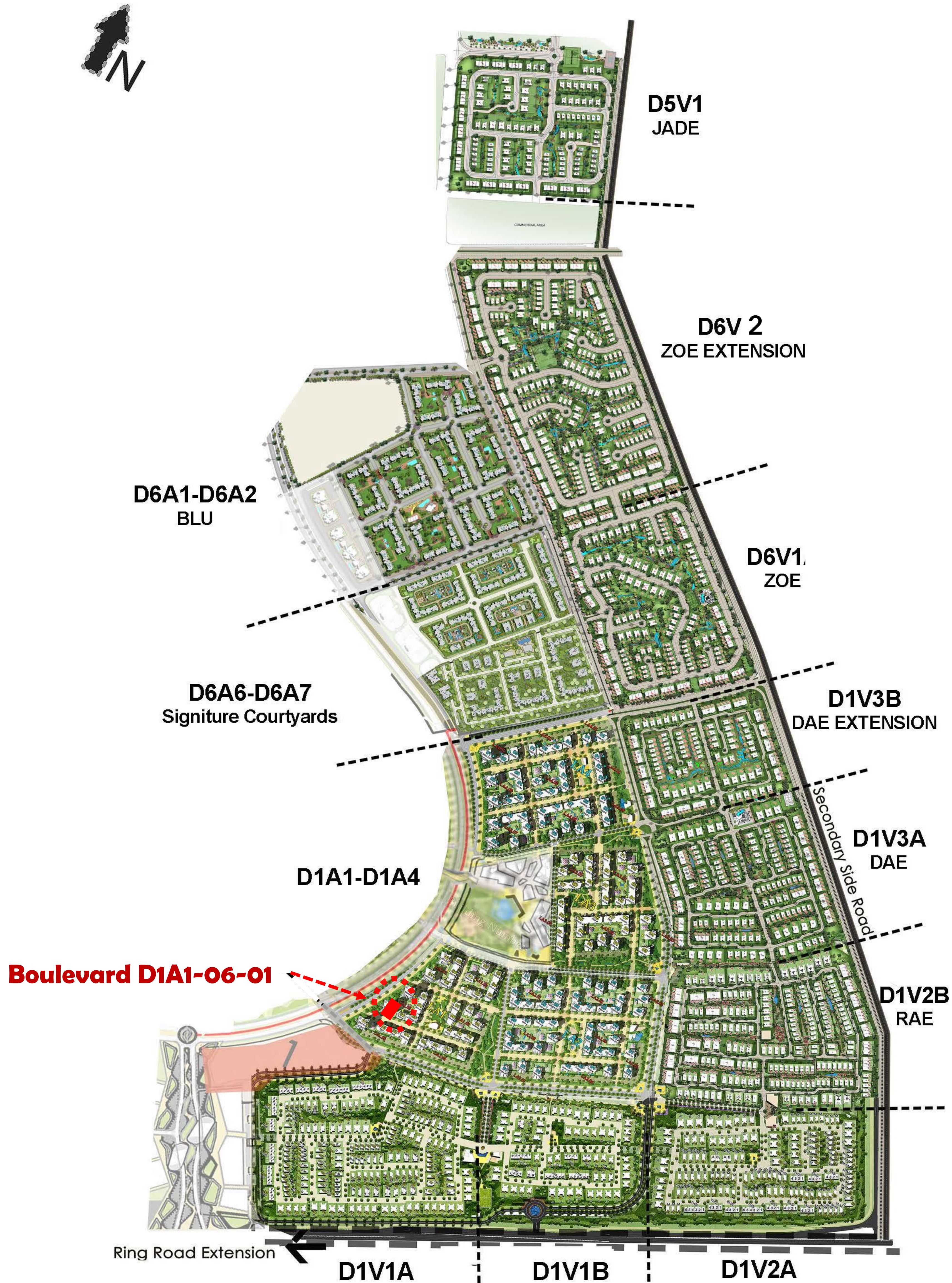


# THE BOULEVARD C4









C4 ( G+10) PRODUCT MIX

| Category | No of Units | Min BUA/SQM | Max BUA/SQM |
|----------|-------------|-------------|-------------|
| 1 Bed    | 28          | 76.17       | 96.82       |
| 2 Bed    | 13          | 145.22      | 173.36      |
| 3 Bed    | 10          | 171.16      | 172.58      |
| Total    | 51          |             |             |



PENTHOUSE APARTMENT VIEW







Ground Floor

|                         |                       |
|-------------------------|-----------------------|
| APARTMENT               | 01                    |
| BUA AREA/M <sup>2</sup> | 171.16 M <sup>2</sup> |
| Garden                  | 80 M <sup>2</sup>     |
| SPECS                   | 3Bed<br>(1 Master)    |

|                         |                       |
|-------------------------|-----------------------|
| APARTMENT               | 02                    |
| BUA AREA/M <sup>2</sup> | 145.22 M <sup>2</sup> |
| Garden                  | 60 M <sup>2</sup>     |
| SPECS                   | 2 Master Bed          |

|                         |                       |
|-------------------------|-----------------------|
| APARTMENT               | 03                    |
| BUA AREA/M <sup>2</sup> | 171.44 M <sup>2</sup> |
| Garden                  | 60 M <sup>2</sup>     |
| SPECS                   | 2 Master Bed          |

|                         |                      |
|-------------------------|----------------------|
| APARTMENT               | 04                   |
| BUA AREA/M <sup>2</sup> | 94.19 M <sup>2</sup> |
| Garden                  | 40 M <sup>2</sup>    |
| SPECS                   | 1 Master Bed         |





Typical Floors  
1<sup>st</sup>, 2<sup>nd</sup>, 3<sup>rd</sup>  
5<sup>th</sup>, 6<sup>th</sup>, 8<sup>th</sup>, 9<sup>th</sup>

|             |                    |
|-------------|--------------------|
| APARTMENT   | *1                 |
| BUA AREA/M² | 172.58 M²          |
| SPECS       | 3Bed<br>(1 Master) |

|             |              |
|-------------|--------------|
| APARTMENT   | *2           |
| BUA AREA/M² | 145.88 M²    |
| SPECS       | 2 Master Bed |

|             |              |
|-------------|--------------|
| APARTMENT   | *3           |
| BUA AREA/M² | 96.82 M²     |
| SPECS       | 1 Master Bed |

|             |              |
|-------------|--------------|
| APARTMENT   | *4           |
| BUA AREA/M² | 76.17 M²     |
| SPECS       | 1 Master Bed |

|             |              |
|-------------|--------------|
| APARTMENT   | *5           |
| BUA AREA/M² | 94.19 M²     |
| SPECS       | 1 Master Bed |





Typical Floors  
4<sup>th</sup> & 7<sup>th</sup>

|                         |                       |
|-------------------------|-----------------------|
| APARTMENT               | *1                    |
| BUA AREA/M <sup>2</sup> | 171.16 M <sup>2</sup> |
| SPECS                   | 3Bed<br>(1 Master)    |

|                         |                       |
|-------------------------|-----------------------|
| APARTMENT               | *2                    |
| BUA AREA/M <sup>2</sup> | 146.40 M <sup>2</sup> |
| SPECS                   | 2 Master Bed          |

|                         |                      |
|-------------------------|----------------------|
| APARTMENT               | *3                   |
| BUA AREA/M <sup>2</sup> | 96.82 M <sup>2</sup> |
| SPECS                   | 1 Master Bed         |

|                         |                      |
|-------------------------|----------------------|
| APARTMENT               | *4                   |
| BUA AREA/M <sup>2</sup> | 76.17 M <sup>2</sup> |
| SPECS                   | 1 Master Bed         |

|                         |                      |
|-------------------------|----------------------|
| APARTMENT               | *5                   |
| BUA AREA/M <sup>2</sup> | 94.19 M <sup>2</sup> |
| SPECS                   | 1 Master Bed         |





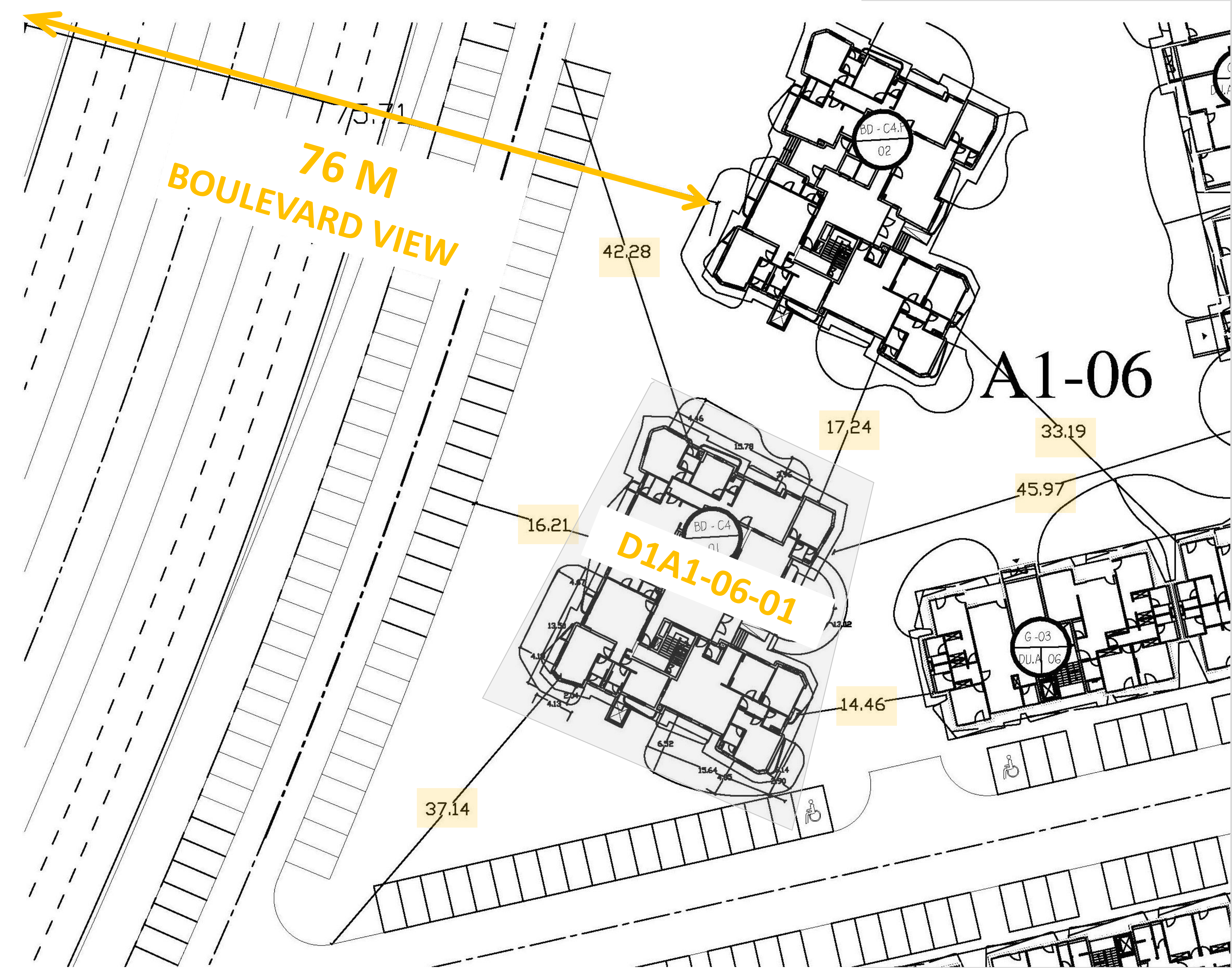
| APARTMENT               | 101                   |
|-------------------------|-----------------------|
| BUA AREA/M <sup>2</sup> | 173.36 M <sup>2</sup> |
| Roof                    | 133.62 M <sup>2</sup> |
| SPECS                   | 2 Master Bed          |

| APARTMENT               | 102                   |
|-------------------------|-----------------------|
| BUA AREA/M <sup>2</sup> | 159.05 M <sup>2</sup> |
| Roof                    | 98.38 M <sup>2</sup>  |
| SPECS                   | 2 Master Bed          |

10<sup>th</sup> / Penthouse Floor



LANDSCAPE DISTANCES  
BOULEVARD C4



INDICATIONAL  
SECTION  
G+10

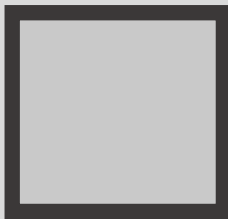
|                  | APT 101<br>2 BED |                 |                 | APT 102<br>2 BED |                 |
|------------------|------------------|-----------------|-----------------|------------------|-----------------|
| 10 <sup>TH</sup> | APT *1<br>3 BED  | APT *2<br>2 BED | APT *3<br>1 BED | APT *4<br>1 BED  | APT *5<br>1 BED |
| 9 <sup>TH</sup>  | APT *1<br>3 BED  | APT *2<br>2 BED | APT *3<br>1 BED | APT *4<br>1 BED  | APT *5<br>1 BED |
| 8 <sup>TH</sup>  | APT *1<br>3 BED  | APT *2<br>2 BED | APT *3<br>1 BED | APT *4<br>1 BED  | APT *5<br>1 BED |
| 7 <sup>TH</sup>  | APT *1<br>3 BED  | APT *2<br>2 BED | APT *3<br>1 BED | APT *4<br>1 BED  | APT *5<br>1 BED |
| 6 <sup>TH</sup>  | APT *1<br>3 BED  | APT *2<br>2 BED | APT *3<br>1 BED | APT *4<br>1 BED  | APT *5<br>1 BED |
| 5 <sup>TH</sup>  | APT *1<br>3 BED  | APT *2<br>2 BED | APT *3<br>1 BED | APT *4<br>1 BED  | APT *5<br>1 BED |
| 4 <sup>TH</sup>  | APT *1<br>3 BED  | APT *2<br>2 BED | APT *3<br>1 BED | APT *4<br>1 BED  | APT *5<br>1 BED |
| 3 <sup>RD</sup>  | APT *1<br>3 BED  | APT *2<br>2 BED | APT *3<br>1 BED | APT *4<br>1 BED  | APT *5<br>1 BED |
| 2 <sup>ND</sup>  | APT *1<br>3 BED  | APT *2<br>2 BED | APT *3<br>1 BED | APT *4<br>1 BED  | APT *5<br>1 BED |
| 1 <sup>ST</sup>  | APT *1<br>3 BED  | APT *2<br>2 BED | APT *3<br>1 BED | APT *4<br>1 BED  | APT *5<br>1 BED |
| G                | APT 01<br>3 BED  | APT 02<br>2 BED | APT 03<br>2 BED |                  | APT 04<br>1 BED |

KEY PLAN

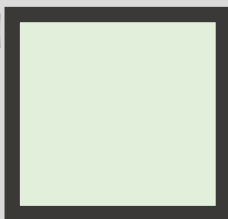
10<sup>TH</sup>  
FLOOR



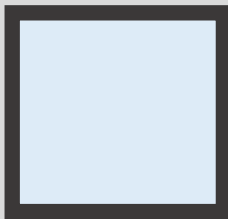
4<sup>TH</sup> & 7<sup>TH</sup>  
FLOORS



1<sup>ST</sup> ,2<sup>ND</sup> ,3<sup>RD</sup> ,5<sup>TH</sup>  
,6<sup>TH</sup> ,8<sup>TH</sup> ,9<sup>TH</sup>  
FLOORS

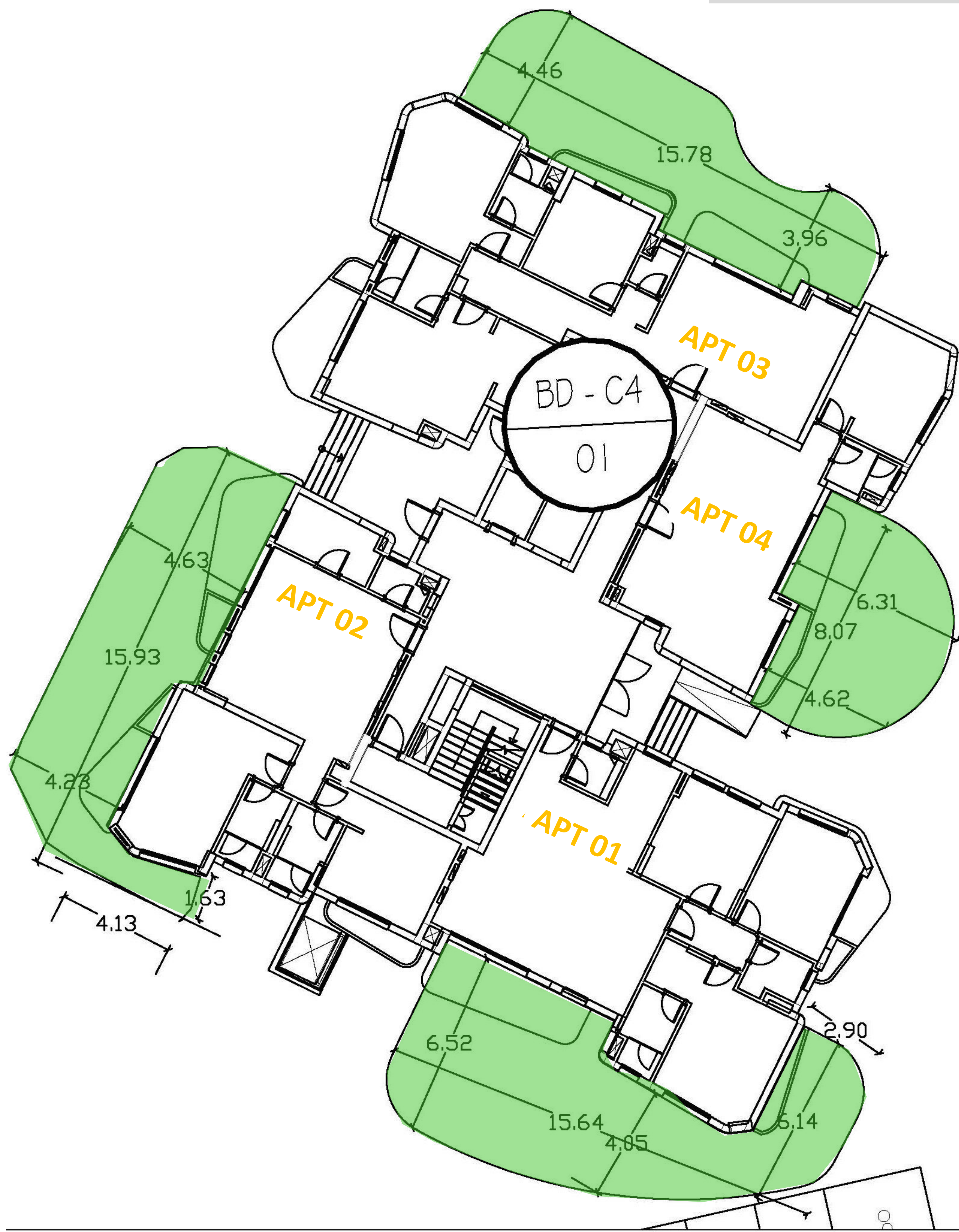


GROUND  
FLOOR





GROUND APARTMENTS  
GARDEN DIMENSIONS





|                               |  |
|-------------------------------|--|
| Sanitary Works                | Drainage and feeding openings for kitchen and bathrooms                |
| Electrical installations      | Internal Supplies for all spaces without cables                        |
| External/Internal Doors       | MDF or equivalent  |
| Flooring Tiles                | Bedrooms: Cement tiles<br>Terraces : Local ceramic tiles or equivalent |
| Openings/Windows              | Aluminum or PVC panels or equivalent                                   |
| Internal Plastering for walls | Cement Plaster except for bathrooms and kitchens                       |
| External Building Facades     | Acrylic / external paints or equivalent                                |
| Insulations                   | Thermal insulation and Damp proofing for all surfaces                  |



Unit Type: Apartments

Finishing Type: 3/4-Finished

Project Name: BADYA

|                      |   |
|----------------------|---|
| البياض الداخلي       | محارة الحوائط الداخلية والاسقف – (عدا حوائط الحمامات و المطبخ)                                    |
| اعمال الكهرباء       | المدادات الداخلية للوحدة بدون أسلاك   |
| اعمال الصحي          | عمل مدخل الصرف و التغذية فقط للمطبخ والحمامات   |
| الأرضيات             | بلاط اسمنتى للوحدة للغرف فقط -(غير شاملة الريسبشن) و سيراميك محلي للتراسات أو ما يماثلها          |
| الباب الرئيسي للوحدة | من ال MDF او من حشو الكونتر أو ما يماثلها   |
| المدخل               | أرضيات المداخل للعمارات و طرقات الأدوار من الرخام المصري او ما يماثلله<br>والحوائط دهانات بلاستيك |
| الفتحات              | من قطاعات الالومنيوم / UPVC المحلية أو ما يماثلها.  |
| اعمال الواجهات       | دهانات اكريليك او ما يماثلها  |
| عزل                  | عزل الاسطح  |